

# Walworth Community Council

Saturday 10 March 2012

1.00pm

Thurlow Lodge Community Hall, 1 Thurlow Street, London SE17 2US

## Membership

Councillor Martin Seaton (Chair)  
Councillor Darren Merrill (Vice-Chair)  
Councillor Catherine Bowman  
Councillor Neil Coyle  
Councillor Patrick Diamond  
Councillor Dan Garfield  
Councillor Lorraine Lauder MBE  
Councillor Abdul Mohamed  
Councillor Helen Morrissey

---

Members of the committee are summoned to attend this meeting

**Eleonor Kelly**

Acting Chief Executive

Date: Friday 2 March 2012



## Order of Business

- | Item No. | Title  |
|----------|--|
| 1.       | INTRODUCTION AND WELCOME                           |
| 2.       | APOLOGIES  |
| 3.       | DISCLOSURE OF MEMBERS' INTERESTS AND DISPENSATIONS |

Members are asked to declare any interest or dispensation and the nature of that interest or dispensation which they may have in any of the items under consideration at this meeting.

Item No.	Title	Time
4.	<b>ITEMS OF BUSINESS THAT THE CHAIR DEEMS URGENT</b>	
	The chair to advise whether they have agreed to any item of urgent business being admitted to the agenda.	
5.	<b>MINUTES</b> (Pages 1 - 8)	
	To confirm as a correct record the minutes of the meeting held on 21 January 2012.	
6.	<b>DEPUTATIONS/PETITIONS (IF ANY)</b>	1:05pm
7.	<b>COMMUNITY ANNOUNCEMENTS</b> (Pages 9 - 27)	1:20pm
	<ul style="list-style-type: none"> <li>• Walworth Youth Community Council</li> <li>• Supplementary Planning Document (SPD) feedback - Kate Johnson, Senior Planning Policy Officer</li> <li>• Safer Neighbourhoods Teams feedback</li> <li>• Elephant and Castle Leisure Centre - Matthew Rees, Senior Project Manager</li> </ul>	
8.	<b>OLYMPIC AND PARALYMPIC GAMES</b>	1:40pm
	Paul Cowell, Events, Film and 2012 Manager	
9.	<b>BOWEL CANCER UK</b>	2:00pm
	Gail Curry, Bowel Cancer UK	
10.	<b>OPEN SPACES STRATEGY</b>	2:10pm
	Kate Johnson, Senior Planning Policy Officer	
11.	<b>CLEANER GREENER SAFER CAPITAL FUND</b> (Pages 28 - 32)	2:20pm
	Executive Function	
	Councillors to consider the recommendations contained in the report.	
12.	<b>CLEANER GREENER SAFER REVENUE FUND</b>	2.30pm
	Announcement	

Item No.	Title	Time
13.	<b>PUBLIC QUESTION TIME</b> (Pages 33 - 36)	2:35pm

This is an opportunity for public questions to be addressed to the chair.

Residents or persons working in the borough may ask questions on any matter in relation to which the council has powers or duties.

Responses may be supplied in writing following the meeting.

**EXCLUSION OF THE PUBLIC AND PRESS**

That the public be excluded from the meeting for the following items of business on the grounds that they involve the likely disclosure of exempt information as defined in paragraphs 1 and 2, Access to Information Procedure rules of the Constitution.

14.	<b>SCHOOL GOVERNORS APPOINTMENTS</b>	2:45pm
-----	--------------------------------------	--------

Executive Function

To consider the recommendations set out in the closed report.

Date: Friday 2 March 2012

## **INFORMATION FOR MEMBERS OF THE PUBLIC**

---

**CONTACT:** Gerald Gohler, Constitutional Officer, Tel: 020 7525 7420  
or email: [gerald.gohler@southwark.gov.uk](mailto:gerald.gohler@southwark.gov.uk)  
Website: [www.southwark.gov.uk](http://www.southwark.gov.uk)

---

### **ACCESS TO INFORMATION**

On request, agendas and reports will be supplied to members of the public, except if they contain confidential or exempted information.

### **ACCESSIBLE MEETINGS**

The council is committed to making its meetings accessible. For further details on building access, translation and interpreting services, the provision of signers and other access requirements, please contact the Constitutional Officer.

Disabled members of the public, who wish to attend community council meetings and require transport assistance in order to attend, are requested to contact the Constitutional Officer. The Constitutional Officer will try to arrange transport to and from the meeting. There will be no charge to the person requiring transport. Please note that it is necessary to contact us as far in advance as possible, and at least three working days before the meeting.

### **BABYSITTING/CARERS' ALLOWANCES**

If you are a resident of the borough and have paid someone to look after your children or an elderly or disabled dependant, so that you can attend this meeting, you may claim an allowance from the council. Please collect a claim form from the Constitutional Officer at the meeting.

### **DEPUTATIONS**

Deputations provide the opportunity for a group of people who are resident or working in the borough to make a formal representation of their views at the meeting. Deputations have to be regarding an issue within the direct responsibility of the Council. For further information on deputations, please contact the Constitutional Officer.

**For a large print copy of this pack,  
please telephone 020 7525 7420.**

## Walworth Community Council

### Language Needs

If you would like information on the Community Councils translated into your language please telephone 020 7525 7385 or visit the officers at 160 Tooley Street, London SE1 2TZ

### Spanish:

#### Necesidades de Idioma

Si usted desea información sobre los Municipios de la Comunidad traducida a su idioma por favor llame al 020 7525 7385 o visite a los oficiales de 160 Tooley Street, Londres SE1 2TZ

### Somali:

#### U-Baahnaanshaha Luqadda

Haddii aad u baahan tahay macluumaadka ku saabsan Guddiyada Beelaha oo lagu tarjumay luqaddaada fadlan soo wac khadka taleefoonka 020 7525 7385 ama booqasho ugu tag hawladeennada ku sugan 160 Tooley Street, London SE1 2TZ

### French:

#### Besoins de Langue

Si vous désirez obtenir des renseignements sur les Community Councils traduits dans votre langue, veuillez appeler le 020 7525 7385 ou allez voir nos agents à 160 Tooley Street, London SE1 2TZ

### Bengali:

#### ভাষার প্রয়োজন

আপনি যদি নিজের ভাষায় কমিউনিটি কাউন্সিল সম্পর্কে তথ্য পেতে চান তাহলে 020 7525 7385 নম্বরে ফোন করুন অথবা 160 Tooley Street, London SE1 2TZ ঠিকানায় গিয়ে অফিসারদের সাথে দেখা করুন।

### Yoruba:

#### Awon Kosemani Fun Ede

Bi o ba nfe àlàyé kíkún l'ori awon Ìgbimò ti Àwùjò ti a yi pada si ede abíní re, jọwọ tẹ wa l'aago si ori nombá yi i : 020 7525 7385 tabi ki o yo ju si awon òṣiṣẹ ni ojúlẹ 160 Tooley Street , London SE1 2TZ .

Igbo:

Asusu

I choo imata gbasara Council na asusu gi ikpoo ha n'okara igwe 020 7525 7385 ma obu igaa hu ndi oru ha na 160 Tooley Street, London SE1 2TZ

Krio:

Na oose language you want

If you lek for sabi all tin but Community Council na you yone language, do ya telephone 020 7525 7385 or you kin go talk to dee officesr dem na 160 Tooley Treet, London SE1 2TZ.

Twi:

Kasaa ohohia,

se wopese wo hu nsem fa Community Councils ho a, sesa saakasa yie ko wo kuro kasa mu. wo be tumi afre saa ahoma torofo yie 020 7525 7385 anase ko sra inpanyinfo wo 160 Tooley Street, London SE1 2Tz.



## WALWORTH COMMUNITY COUNCIL

MINUTES of the Walworth Community Council held on Saturday 21 January 2012 at 1.00 pm at Walworth Academy, 34 - 40 Shorncliffe Road, London SE1 5UJ

---

**PRESENT:** Councillor Martin Seaton (Chair)  
Councillor Darren Merrill (Vice-Chair)  
Councillor Catherine Bowman  
Councillor Neil Coyle  
Councillor Patrick Diamond  
Councillor Dan Garfield  
Councillor Abdul Mohamed  
Councillor Helen Morrissey

**OTHER MEMBERS PRESENT:** Councillor Richard Livingstone

**OFFICER SUPPORT:** Jon Abbott (Elephant and Castle Project Director)  
Pauline Bonner (Borough & Bankside and Walworth Neighbourhood Coordinator)  
Rumi Bose (Planning Policy Officer)  
Tim Cutts (Acting Head of Planning Policy)  
Wendy Foreman (Senior Campaigns Officer)  
Emma Fenton (Senior Planning Policy Officer)  
Michael Glasgow (Policy Planning Officer)  
Tim Gould (Transport Group Manager – Strategic Projects)  
Kate Johnson (Senior Planning Policy Officer)  
Barbara-Ann Overwater (Senior Planning Policy Officer)  
Alison Squires (Planning Policy Team Leader)  
Michael Tsoukaris (Design and Conservation Manager)  
John Wade (Temp Parks & Open Spaces Manager)  
Mark Whitehouse (Community council development officer)  
Gerald Gohler (Constitutional Officer)

### 1. INTRODUCTION AND WELCOME

The chair welcomed councillors, members of the public and officers to the meeting.

## 2. APOLOGIES

There were apologies for absence from Councillor Lorraine Lauder due to mayoral duties.

## 3. DISCLOSURE OF MEMBERS' INTERESTS AND DISPENSATIONS

There were none.

## 4. ITEMS OF BUSINESS THAT THE CHAIR DEEMS URGENT

There were none.

## 5. MINUTES

**ACTION:** Members requested that the following be added to minutes of meeting held on 2 November 2012, under item 7 "Community Announcements":

"There was a discussion about the fact that Southwark Law Centre was going to lose a significant amount of funding due to the cuts in Legal Aid."

### **RESOLVED:**

That the minutes of the meeting held on 2 November 2011, including the above amendment, be agreed as an accurate record, and signed by the chair.

## 6. DEPUTATIONS/PETITIONS (IF ANY)

There were none.

## 7. COMMUNITY ANNOUNCEMENTS

### **Southwark Civic Awards**

Ken Hayes, Honorary Chair of the Southwark Civic Association, spoke to the meeting about the Civic Awards. He explained that the Civic Association, which is independent of the council, had been in existence since 1995, with the first Civic Awards having been awarded in 1996. There were three levels of award: Letter of Commendation, Liberty of the Borough and "Of the Year" Award. He went on to say that this year, following the riots a new category of Citizenship Award for acts of Civic Responsibility had been created, for acts of civil responsibility during or after the disturbances. These awards were a source of enormous pride for those who received them, as they were being honoured by their fellow citizens. He invited people to submit their nominations for the awards on the forms which were available from all libraries or via the website. The deadline for nominations was until 31 January 2012. He reminded people that the awards were aimed at outstanding civic activity outside of people paid employment. More information was available at [www.southwarkcivicassociation.org](http://www.southwarkcivicassociation.org).



The meeting heard that for outstanding achievements as part of one's profession there were other awards, for example the new year's honours list. The chair thanked Ken Hayes for attending.

### **Support choices**

Wendy Foreman, Senior Campaigns Officer, introduced the council's new "Support Choice" resource to adult social care, which was designed to provide information about services in one single place. The resource had been user tested and was therefore easy to use. The advantage of the system being electronic was that updates could be made continuously, which ensured the information was always up-to-date. 60 providers were currently listed, but this number would further increase, as more information was being added. Wendy went on to explain that staff in the council's libraries had been trained to help people navigate the resource, and were on-hand to help those people who did not access to the internet, or who felt they were not IT literate enough to use the system. Responding to questions Wendy said that the eligibility criteria for the various services could be found on the website.

More information at <http://www.southwark.gov.uk/mysupportchoices>.

### **Burgess Park**

John Wade, Temp Parks & Open Spaces Manager, told the meeting that the opening of the park would be delayed until summer 2012. This was due to large oil tanks having been found at the Camberwell Road end of the park. These had to be made safe and removed. The car park and the play area would be opened earlier than the rest of the park – in March 2012. There was going to be a walk-about on 11 Feb 2012 at 10am. Places would be allocated on a first come, first serve basis.

Responding to questions, John said that officers had considered opening other parts of the park, but as the park was a building site, there were health and safety implications and this was not possible, however the car park and the play area would be opened in March. He invited people to contact Nadia Chowdari, Project Support Officer at [Nadia.Chowdari@southwark.gov.uk](mailto:Nadia.Chowdari@southwark.gov.uk).

### **Elephant and Castle Update**

Ciron Edwards, from Soundings representing LendLease, fed back on the latest consultation activities. The leisure centre consultation was ongoing at the conservation hub, there would also be a new leaflet distributed to people in the area. On 9 Feb 2012, the community forum would take place at 182 Walworth Road opposite Amelia Street.

Responding to questions from the floor, Councillor Richard Livingstone said that the demolition of the Heygate Estate had been brought forward and that the council would be paid back the money from LendLease which the council had advanced, and that the money would be paid back with interest.

A question was also raised about whether LendLease had found a financier yet for the parts of the scheme which had not been given planning consent. Ciron said he would provide feedback on this.

### **Safer Neighbourhoods Team (SNT) Update**

PS Daly from East Walworth SNT, and Vinny Gage from Newington and Faraday SNTs introduced Inspector Barton who was now responsible for the Safer Neighbourhoods

teams in Southwark.

The meeting heard that the next ward meeting for East Walworth would take place on 22 February 2012 at 7pm at the Browning Community Centre; the ward meeting for Faraday SNT on 7 March at St Peter's/Inspire in Liverpool Grove.

In terms of the activities and ward priorities for the different SNTs, these were:

#### East Walworth

- Operations targeting unlicensed premises
- Operation Reclaim targeting uninsured and/or untaxed cars
- Distribution of 10,000 crime prevention leaflets
- Olympics rotas drawn up – SNTs will work 4 out of 5 Saturdays, and 3 out of 5 Sundays
- A new newsletter would be published in March

#### Newington

- Ward priorities: anti-social behaviour on Walworth Road, and Penrose House, burglaries on Newington Estate
- Recently executed a warrant and shut down a cannabis factory

#### Faraday

- Ward priorities: anti-social behaviour around Tower Bridge and youth anti-social behaviour around Gayhurst

Responding to a question from members, Inspector Barton explained that anecdotally the crime situation around Elephant and Castle had improved and that the main problems were mobile phone thefts with bicycles. There was an active robbery squad, but officers also did a lot of work around preventing anti-social behaviour and anti-violence.

Responding to a question about the extension of the Northern Line from Kennington Underground Station, PS Gage said that his team had not been consulted directly, but that maybe one of his superiors had. He agreed that an extension of the line would probably increase the footfall at the station, and therefore potentially lead to more incidents, and necessitate increased patrols.

#### **Recycling/Waste collections**

The chair announced that Ian McGeough, from Veolia, was in attendance, who would be happy to speak to people about their queries regarding recycling and waste collections. Ian McGeough informed the meeting about the new processing and recycling facility on the Old Kent Road which featured the following main components:

The centre itself which sorted and recycled the waste, the recycling discovery centre for children at Key Stage 2, and a permanent exhibition/meeting space which community groups could use. He reminded the meeting that the facility at Manor Place was now closed. A question was raised about rescheduling collections for blue wheelie bins, Ian said he would speak to the resident in the break.

#### **Walworth Society**

The meeting heard that the Walworth Society aimed to give a voice to local people on the architecture in the area and that the society was concerned about the former Kennedy

butcher's shop which was the only listed shop front on Walworth Road.

### **Elephant Amenity Network**

The network will meet on 28 January 2012 at 10.30am at the Conway Church on the New Kent Road to discuss the Elephant and Castle Opportunity Area supplementary planning document, and to draft an alternative plan.

### **Lorrimore Road shops**

Councillor Patrick Diamond informed the meeting that a meeting was taking place on 24 January 2012 at 7pm in the TRA hall in Lorrimore Road to discuss the future of the derelict shops in Manor Place. The community was keen to ensure affordable housing and shops for the area.

The chair thanked all speakers for attending.

## **8. BUDGET 2012/2013**

Councillor Richard Livingstone, cabinet member for finance, resources and community safety, introduced this item saying that the new budget was the second year of the 3-year budget framework which was agreed in 2011. The council was facing continuous and large scale cuts of the grant received from central government, and that Southwark was more affected by this than other local authorities in the country, as it received a higher percentage of its budget in the central government grant.

The final decision on the budget 2012/13 would be taken at the Council Assembly meeting on 29 February 2012, with the proposal being agreed by Cabinet on 7 February. Residents could view the proposals on the Southwark website. There would be no new cuts, but some changes had been made in the proposals: the cost of meals on wheels would decrease, adult/social care cuts would be less severe than originally proposed, a community restoration fund had been put in place for business most severely affected by the disturbances, and the council had put in place a youth initiative and would continue the youth fund to give young people opportunities to stay in post-16 education. Healthy free school meals would be introduced for primary years 2, 3 and 4 to add to the existing programme for year 1. Council tax would be frozen, and all council staff (including agency staff) would be paid a London living wage. This would be achieved by taking some funds from the council's reserves.

Responding to a question from the floor, Councillor Livingstone explained that abolishing the council tax would have to be done at national level, but that the council had increased its collection rate by taking the service back in-house since April 2011. He went on to explain that the housing call centre was paid for from a separate account, and that the efficiencies made there could not be used for the council's main budget. The council was, however, in negotiations with the company who provided the service to improve this. Furthermore, the council was saving £1m in pay for senior managers in the coming year. The budget situation involved making a lot of difficult choices.

The chair thanked Councillor Livingstone for attending.

## 9. ELEPHANT AND CASTLE OPPORTUNITY AREA SUPPLEMENTARY PLANNING DOCUMENT

Tim Cutts, Acting Head of Planning Policy, introduced the background to the document and some of the policies contained in it, such as 35% affordable (social rented and shared-ownership) housing, education, libraries, but also transport and movement, for example escalators in the Northern Line Underground station. There were also traffic proposal in the document such as making St George's Road two ways, while London Road would be a public transport only road. The leisure centre and the Tabernacle were also taken into account, as well as St Mary's Church Yard. The document divided the area into nine character areas. The consultation would end on 7 February 2012.

He explained the way the workshops would be conducted, and he meeting split into workshops.

Following the workshops, the meeting heard the following feedback:

- Community infrastructure and transparency in the decision making was important
- Public toilets and libraries in the area needed to be preserved and extended
- The public realm was not a blank canvass. Planners should work with what is already there. It was important to look at development on a micro-level and adopt a bottom-up approach. Officers needed to go out and about more and speak to people.
- Affordable homes were important, but the definition should be that they really are affordable to local people

The chair said that the consultation feedback would be added to the minutes, and thanked everyone for attending.

## 10. PUBLIC QUESTION TIME

The meeting heard that those residents who had been issued with an "AD" badge by Southwark Council to prevent their blue badge being stolen, had to take care when trying to park on TfL-controlled routes, as TfL did not accept the "AD" badge.

**ACTION:** Chair to invite TfL to the next meeting to present give feedback on accepting Southwark's "AD" badges on red routes.

A request was made to hold another consultation event about the Elephant and Castle development for the Latin American community, with translators on hand, should be made.

The chair asked for Soundings who were charged with conducting consultations for LendLease to contact Latin American community groups.

The following public questions were submitted in writing:

1. "Can we have a plaque to honour, Princess Diana in front of St Matthews's Church at the Elephant and Castle, because next year will be the 20<sup>th</sup> anniversary of her visit to Southwark?"

2. "Did you have a meeting on Southwark burial or is it to come?"
3. "We as a tenant and resident association are being asked to change our constitution by the council: 1. We have a clause that a general meeting may be called, if and when needed, 2. The council ask for a change to 4 general meetings a year, 3. What happens if at our AGM the members vote against this?"
4. "In light of the increase in trend of the practice of skin lightening/bleaching. What are the council going to do to ensure that the availability of these poisons are stopped: financial implications, prosecutions and education."
5. "Will the council take steps to improve the safety of Mina Road? It has become a 'rat-race' for cars and vans who want to by-pass the traffic lights at the Albany Road/Old Kent Road intersection. The 20 mph limit is ignored. They push through three lanes of traffic to get across to Dunton Road, causing traffic jams and road rage incidents. I am waiting for an inevitable fatal accident on Mina Road. There were proposals to make Mina Road a dead-end at the Old Kent Road. What happened to this?"
6. "The signs on the hoardings enclosing the Heygate Estate state clearly: 'THIS REGENERATION SITE HAS 24 HOUR LIVE SECURITY PATROLS'. The police approached residents of Garland Court on the evening of 31 December 2011, looking for witnesses to an incident by the estate. Has the Community Council been informed about this event?"
7. "Are the Community Council also aware of the case of serious assault that occurred on Wansey Street at around 11.00pm on 18 August 2011?"
8. Is security for the Estate provided by the Council or by the regeneration firm LendLease?
9. Residents of Garland Court have not noticed any visible signs of security, or the presence of security on the Heygate site for over a year. How often do these take place?

## 11. COMMUNITY COUNCIL HIGHWAYS CAPITAL INVESTMENT 2012/13

Executive Function

Members considered the report.

### **RESOLVED:**

That the following works be funded from the Walworth Community Council Highways Capital Investment budget 2012/13:

	Description of scheme	Estimated Cost
Alberta St	Carriageway : Plane off and resurface (40mm) between VISIT; reinstate road marking	£37,500
Aylesbury Grove	Carriageway : Plane off and resurface (40mm)	£25,000
Congreve St	Carriageway : Plane off and resurface (40mm) between East St and Massinger St ; some full depth construction required; also limited channel re-profiling and making good disturbed footway; reinstatement of two sets of speed cushions and road marking.	£38,400

## 12. SCHOOL GOVERNORS APPOINTMENTS

Executive Function

Councillors did not resolve to exclude the public and press from the meeting as they did not discuss the exempt information.

### **RESOLVED:**

That Ms Claire Gosnell be appointed as a school governor at Surrey Square Primary School.

The meeting ended at 3.35 pm.

**CHAIR:**

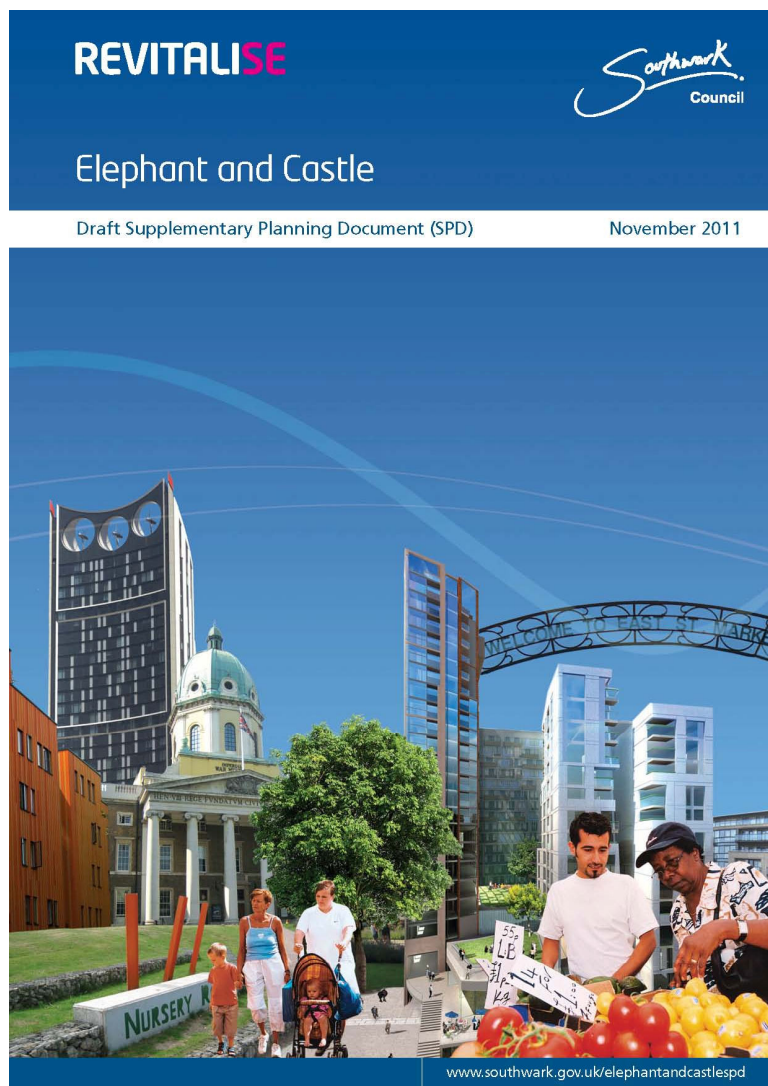
**DATED:**



**WALWORTH COMMUNITY COUNCIL (21 JANUARY 2012)**

**CONSULTATION ON THE DRAFT ELEPHANT & CASTLE  
SUPPLEMENTARY PLANNING DOCUMENT (SPD)**

**REPORT ON THE DRAFT SPD CONSULTATION WORKSHOP**



## **Introduction**

1. This report sets out a record of the feedback which was obtained at the Walworth Community Council meeting which included the Elephant & Castle SPD workshop.
2. Attendance at the meeting comprised of:
  - Ward Councillors:
    - Councillor Martin Seaton (Chair)
    - Councillor Darren Merrill (Vice-Chair)
    - Councillor Catherine Bowman
    - Councillor Neil Coyle
    - Councillor Patrick Diamond
    - Councillor Dan Garfield
    - Councillor Abdul Mohamed
    - Councillor Helen Morrissey
  - Southwark Council officers
    - Planning Policy team – 7 officers
    - Transport Group Manager – Strategic Projects
    - Design and Conservation Manager
    - Elephant and Castle Project Director
  - Local residents and interested members of the public.

## **Background**

3. The Walworth Community Council meeting was held at the Walworth Academy, Shorncliffe Road, London SE1 5UJ on Saturday, 21 January 2012. The meeting was the first community council meeting in 2012.
4. Community councils are part of the council's decision making process and are a focal point for discussion on local matters. Local councillors elected to represent the area sit on the community councils and take decisions relating to key areas such as
  - Traffic management
  - Community safety
  - Planning applications
  - Environmental improvements
  - Appointment of primary school governors.
5. Community council meetings are also a forum for consultation with local people and provide an opportunity for residents to influence how council services are delivered.
6. The Planning Policy team requested to attend the meeting in order to consult with residents on the draft SPD proposals, in accordance with our Statement of Community Involvement. The consultation period for the SPD ran from 15 November 2011 until 7 February 2012.



### **Publicity**

7. The meeting was advertised on the council's SPD webpage [www.southwark.gov.uk/elephantandcastlespd](http://www.southwark.gov.uk/elephantandcastlespd); at SPD consultation meetings with local business representatives and residents and also via the channels available to the constitutional team i.e. through the website, through a mail-out, and publicity through councillor surgeries.
8. The publicity for the Community Council meeting was called "Have your say: A vision for the Elephant & Castle".

### **Meeting format**

9. The first half of the meeting was dedicated to various community announcements and a presentation on the council's Budget 2012/13 by Councillor Richard Livingstone, Cabinet member for finance, resources.
10. The second half of the meeting was dedicated to consultation on the SPD, comprising of two fifteen minute workshops. Further detail is set out below.
11. The Planning Policy manager provided a power point presentation to introduce the SPD consultation workshop sessions. A brief overview of the SPD was provided, which included the purpose of the SPD, and its vision and the objectives for new development.
12. Consultation exhibition 'pop-up' banners were displayed in the hall to provide a summary of the themes and objectives in the draft SPD accompanied by photos and maps (Appendix 1).

### **The workshops**

13. The workshops comprised of two 15 minute sessions. This provided the opportunity for people to discuss two different 'Themes' from the SPD.
14. Nine tables were organised around the hall with a designated 'Theme', so that the participants could choose what they wanted to discuss. These themes were: Transport; Social and Community Infrastructure; Built Environment; Natural Environment; Town Centre; Housing.
15. Each table was facilitated by a council officer and a councillor.
16. A questionnaire was provided for participants, to guide discussion and also to provide written comments (Appendix 2). We have summarised the main points made during each workshop below. The views expressed are of the workshop participants and do not necessarily reflect those of Southwark Council.

### **Summary of discussion in workshops**

17. **Town Centre: Shops and Business**
  - There were mixed views expressed about the centre. Some people would prefer to cross the river than shop at Elephant and Castle. It is seen as a functional shopping area where people go to a specific shop and then leave. This issue was mentioned for the shopping centre, but particularly for the Walworth Road area.

- There was a feeling that people are always leaving Elephant and Castle to go elsewhere to shop and rarely coming into the area (transport connections considered a strength and weakness in this regard).
- Some residents felt like there was a good sense of local community and enjoyed going to the town centre because it was busy and vibrant. Some people remarked that they thought that Elephant and Castle is getting to be a better place to live
- Support provided for promoting more linkages between all of the shopping parades and linking the shopping centre with Walworth Road. This should also incorporate Harper Road and New Kent Road. The SPD should also look at shopping parades just outside of the area
- Promote more of a balance between independent/specialist shops and the multiple/large retail shops. It will be important to attract a broad range of retailers and services (i.e. banks) and ensure there is variety.
- There also needs to be a focus on other uses to support shops in the town centre. More restaurants and cafes will be important – particularly the smaller, local, independent styles.
- East Street market needs further support. There is too much of the same type of stall traders. It is currently not well used and the public realm needs improvements. There was discussion on other good examples of markets in the borough e.g. East Dulwich, Borough, Bermondsey. It will be important that East Street market retains its own style and doesn't copy others, but it could try to borrow some ideas from these markets. The range of products and use of space was considered better at these markets. Suggestion of introducing more specialist, temporary markets in Elephant – although also mentioned that this might harm existing local traders who are already finding things difficult.
- The Latin American community is very prevalent and needs to be integral to the redevelopment of the centre. Support was provided for the affordable retail policy, but concern for the proposed minimum 10% requirement for large retail developments.
- The SPD should promote the use of vacant shops.
- The safety and security in the area needs improving to attract larger retailers to the area. Some people felt that the shopping centre was not a safe space and felt uncomfortable shopping there (this feeling extended to the pedestrian subways).
- It will be important to ensure training and jobs are provided for local people, particularly younger people. A key issue is the loss of big employers (i.e. council offices). Need to be clear what the economic assumptions are that underpin our job growth figures. More offices, more shops, more construction work all mentioned as possible areas for new jobs.
- More carparking should be introduced to improve the shopping experience. Surrey Quays cited as a good example. Suggestion of short stay parking system that benefits local residents who already have parking permits.
- Public transport is good, but buses are too crowded, especially if you have shopping bags.

18. [Housing](#)

- There was an overwhelming desire for more affordable homes to be provided in the area.
- There is an issue of buy-to-let properties in the area and the council should out more restrictions in place to prevent this trend.
- There were concerns that the council has not sufficiently linked the Elephant and Castle SPD properly with the Affordable Housing SPD.
- The SPD needs to define locally what we mean by affordable housing.
- There should be a cap on private housing.
- Mixed views on whether shared ownership works.

19. [Natural Environment](#)

- Open spaces are needed and much loved in the area.
- Open spaces should have defined areas for dogs where their owners can take them – dog fouling is an issue in our open spaces.
- We should think more about green spaces and even living walls and living roofs. Living roofs need a sufficient depth of soil to grow.
- Open spaces should be promoted for their educational roles and schools should be encouraged to carry out activities in the open spaces. The value of open spaces for biodiversity and heritage should be advertised on education boards around the area.
- A good example of open space is the recently landscaped area opposite the Old Vic. It looks nice, is green and open and is not filled with equipment.
- Another space that works well is the space the park on Harper Road. This is an example of open space that needs minimal lighting – Lighting is important for open space and getting the right light level is important.
- Open space needs to be safe and well lit if they are to be well used.
- It is important that the Elephant & Castle have an identifiable town centre – a town square – this should be an important open space at the heart of the Elephant & Castle.
- There is a proposal for a new public square at Wansey St as part of the Heygate redevelopment. This should be worked on in conjunction with the local community.
- Paisley Park needs improvements.
- The Heygate Park should open onto Walworth Road or at least have clear links between the park and Walworth Road.
- The approach should be to provide more intermittent green space through the area as part of new development. Public realm should include play space for children
- The names of parks and more street names should be included on the maps.
- Open space is best when it is in multiple use. In some areas people have used the courts around blocks to create allotments. Developments should be

encouraged to provide allotment space – informal areas for people to grow their own crops. It would be nice if some of our open spaces could be left to grow wild.

- Open space helps with pollution and creates safe environments away from the roads.
- Traffic is dangerous in this area and open space helps to make the area safer for children getting to and from school. This is very important on our busy roads like the New Kent Road because it is a fast-moving road and it is not easy to cross it particularly for children and elderly people. Trees create nice pathways but must be well defined and properly separated from traffic, the pavement and new development.

## 20. Built Environment

- The top of Walworth Road needs greater improvement as it is currently dark and unsafe with a lack of activity and surveillance especially at night.
- The public realm should include signage to key destinations and point out the heritage value of local buildings and significance of the area.
- On Falmouth Road the public realm is good but pavements are not wide enough for the trees.
- Elephant and Castle is not a traditional town centre. The arterial road running through the centre makes it difficult for a central area of public realm – where would the heart of the town centre/high street be located?
- Public realm in this area should take on different forms, i.e. a network of local spaces of different sizes linked together with different functions. We quite like public realm to be informal.
- Routes through developments are good. Very important to create good links for pedestrians and cyclists across these public spaces.
- The shopping centre has a strong Latin-American Community. We think that every community should have an opportunity to express their cultural presence in the town centre.
- Keep 'things of value' e.g. trees on Heygate Estate. Consultation should be a 'bottom-up' approach i.e. talk to local people for their knowledge and insight
- Roofs should be well designed and lift overruns are badly designed. The roof of a building is very important and could be an open space in itself.
- It is not nice when front gardens are fenced off with high fences. Front doors and main entrances should be celebrated. The forecourts of buildings are a part of the street experience. It is nice when you can see through the building to the courtyards from the street.
- Developments that rise straight from the edge of the road are not nice and are not well designed. The height of the building should have a good proportion relative to the street. Tall buildings should have wide spaces around them; like Strata but preferably with less paving.

21. **Social and Community Infrastructure**

- New community facilities are needed for in the area. Support for facilities to be made available for different groups.
- A large community space is needed, in order to be able to accommodate large events and groups.
- Schools should provide access to their meeting rooms and halls after-hours for use by community groups.
- There should be more protection of existing creative industries and new space is needed to accommodate more small businesses.
- The use of vacant space should be prioritised. These spaces could be converted to community facilities.
- The Fusion leisure centre is used by a Latin American church group on Sundays. The redevelopment of the site will displace this church group.
- More communal space is needed outside of the central area, in the residential areas of the opportunity area.

22. **Transport**

- Mixed views were expressed on car-free development.
- No car parking provision on the Heygate site would be inappropriate as it would not encourage a stable community (in respect of attracting families and catering for life choices)
- Separation of cycle routes from traffic is important in the area
- Concern was raised that there should be increased provision of public toilets, especially (but not exclusively) in areas near night clubs.

**NEXT STEPS**

23. This report will be included in the meeting minutes to be reported at the next Walworth Community Council meeting. It will also be part of the Elephant and Castle SPD Consultation Report.
24. All the comments made in this report, and those which were provided on the questionnaires, have been considered by the council and have informed the final version of the Elephant and Castle SPD.
25. The SPD will be put forward for adoption to the council's Cabinet in March 2012 and once adopted will be used to inform decisions on planning applications and guide development in the area over the 15 year lifetime of the plan.

Thank you to all who participated at the workshop event.

**REVITALISE**



## Elephant and Castle opportunity area

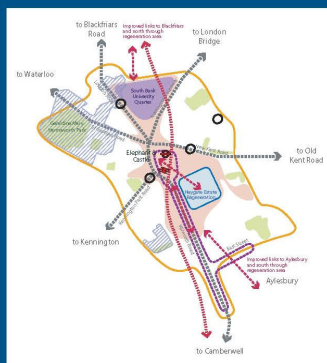
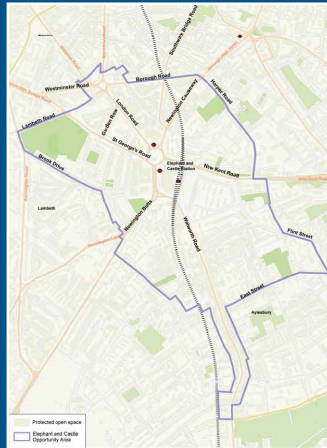
### Draft Supplementary Planning Document (SPD)

The SPD will set out our vision to manage changes in the area over the next 15 years and will provide a framework to guide future development in Elephant and Castle.

This SPD will also be called an opportunity area planning framework which will be used by the Mayor of London to guide his decisions on planning matters in the area.

Our vision is for the area to be able to fulfill its potential as an attractive central London destination and a great place to live, visit, shop and do business.

- We are promoting provision of up to 45,000 square metres of new shopping and leisure floor space, including affordable space
- The area will provide at least 4000 new homes (including 1,400 affordable homes)
- We plan to generate around 5,000 new jobs in a range of sectors including retail, offices, hotels, and leisure
- There will be tall buildings on some sites where this helps stimulate regeneration and creates a distinctive place
- We will plan for a highly efficient public transport hub, including an improved Northern Line station and better access to platforms.
- Existing subways will be removed and replaced by surface pedestrian crossings creating a more attractive and safe environment with priority for public transport users, cyclists and walkers over the car.
- Elephant and Castle will meet the highest possible environmental standards through using low and zero carbon technologies, including renewable energy sources, heat network and combined heat and power
- We want to work with the local community and our partners to make the Elephant and Castle a successful place.



Elephant and Castle vision

### We are consulting on the draft SPD until 7 February 2012

- Fill in a questionnaire to have your say
- Read the report and supporting documents on our website
- Contact [planningpolicy@southwark.gov.uk](mailto:planningpolicy@southwark.gov.uk) or call 020 7525 5471
- Get involved in the discussion about the future of Elephant and Castle on our facebook page

## REVITALISE



### Shopping, leisure and business

Our approach to shopping, leisure and business includes:

- > Strengthening the Elephant and Castle and Walworth Road as a major shopping destination by promoting up to 45,000sqm of new retail and leisure space. The shopping centre will be remodelled and a new retail quarter developed on the Heygate site. It is important we retain local businesses and new shopping floorspace should include affordable retail space.
- > Providing a vibrant mix of activities in the town centre, ensuring it is busy throughout the day and evening.
- > Reinforcing retail activities on the main roads leading into the town centre.
- > Improve the variety of arts, cultural and entertainment offer by providing more cafes and restaurants as well as new leisure and cultural facilities.
- > Supporting business space to be renewed in the area and encouraging the development of an enterprise culture by providing more opportunities for local people and small and medium sized businesses (SMEs).
- > Supporting the regeneration of the railway arches, enabling their use for a mix of uses including business, retail and community uses.



We will support improvements to East Street market

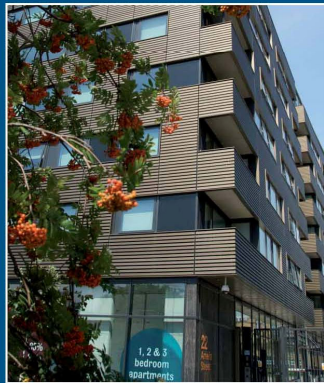


New homes, shops, leisure space and a market square on Elephant Road

### Homes

Our approach to new homes includes:

- > Building a minimum of 4,000 homes.
- > Providing at least 1,400 affordable homes, including social rented and shared ownership homes.
- > Ensuring that at least 10% of new homes have three or more bedrooms and that all new homes provide good quality accommodation and have generous room sizes.
- > Helping address needs for student housing, whilst ensuring that a mix and choice of housing types is available in all character areas.



New homes in a mixed use development on Arniea Street



New homes in Strata and Crampton Street

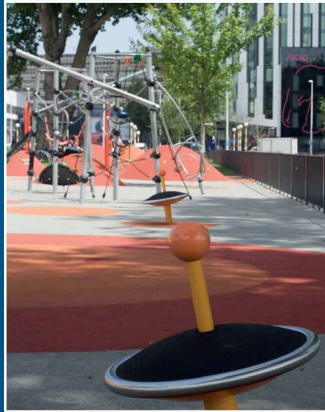
## REVITALISE



### Social and community infrastructure

Our approach to social and community infrastructure includes:

- > Ensuring that new development promotes healthy and active lifestyles.
- > Helping to transform leisure opportunities by building a new leisure centre, including a new swimming pool.
- > Providing more and improved educational, health and community facilities which meet the needs of existing and future residents.
- > Promoting new arts, cultural, leisure and entertainment space on the Heygate site, 50 New Kent Road and the shopping centre to support a lively and vibrant town centre.
- > Supporting the growth of London South Bank University and London College of Communication (University of the Arts).
- > Supporting student housing as part of a mix of housing types.

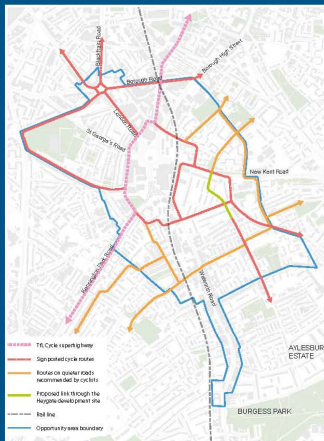


New developments will provide children's play facilities

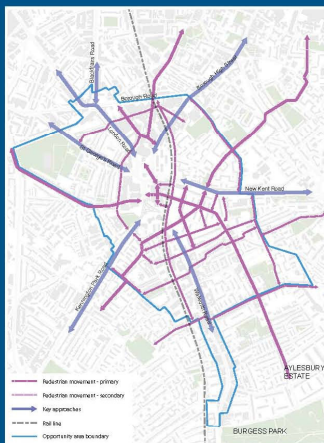
### Transport and movement

Our approach to transport and movement in the area includes:

- > Improving bus, tube and rail facilities and the pedestrian and cycle connections between them.
- > Improving the Northern Line station by providing an improved ticket hall and additional lifts or escalator access to the platforms.
- > Replacing the subways under the northern roundabout with surface level crossings.
- > Converting London Road into a public transport only corridor and introducing two-way traffic movement on St George's Road.
- > Minimising the amount of car parking provided.
- > Using development opportunities to provide a high quality network of pedestrian and cycle links which are attractive, safe and easy to use.



We want to improve and upgrade the network of pedestrian and cycle links in the area





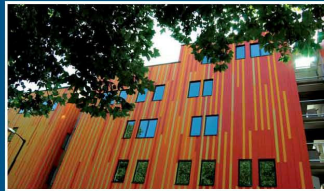
## Urban design

Our approach to urban design in the area includes:

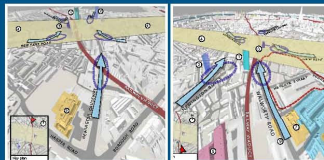
- > Putting in place strong design measure to help reinforce the best elements of the area's character and create a positive identity for areas in need of regeneration.
- > Conserving the area's heritage. We are proposing new conservation areas at Larcom Street and Elliott's Row and are extending protection of buildings to include "locally listed" buildings.
- > Using tall buildings to help signal the regeneration of the area, strengthen gateways into the area and enhance the skyline. Tall buildings must be designed sensitively to avoid micro-climate effects such as wind and overshadowing.
- > Working with TfL, developers and the community to transform the quality of the public realm in the opportunity area.



The area has a rich and diverse heritage



New development should conserve and enhance the area's heritage



Tall buildings strategy: view from the north and south

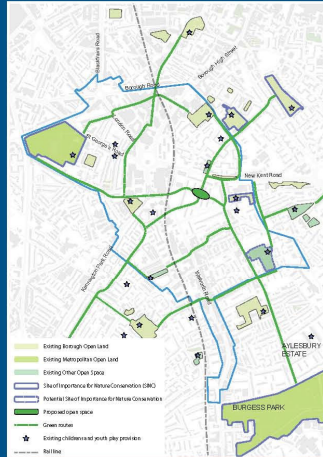
## REVITALISE



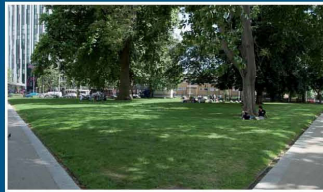
### Natural environment

Our approach to the natural environment in the area includes:

- Promoting a network of high quality open spaces which have a range of functions including recreation, children's play, sports and food growing.
- Using sustainable urban drainage systems to reduce the risk of flooding.
- Expecting development to retain and enhance trees and canopy cover wherever possible as part of the urban forest.
- Maximising and extending ecological diversity through promoting nature conservation in new and existing spaces, high quality landscaping, tree planting and a network of green routes.
- Requiring developers to meet the highest possible environmental standards including Code of Sustainable Homes Level 4 and BREEAM excellent.



We want to maintain and improve a network of open spaces



St Mary's churchyard

### Delivery and implementation

Our approach to delivery and implementation in the area includes:

- Continuing to work with key stakeholders including the local community, landowners, developers, businesses, NHS Southwark, English Heritage, the GLA and Transport for London to deliver the vision and objectives of the SPD.
- Ensuring that physical and social infrastructure needed to support the expanded residential and worker population at the Elephant and Castle is delivered in a timely manner.
- Requiring a section 106 tariff to help fund needed improvements.
- Ensuring that comprehensive redevelopment maximises opportunities to make use of vacant sites on an interim basis.



We want to improve the nature conservation value of open spaces

## REVITALISE



# Elephant and Castle character areas

The SPD sets out guidance for nine character areas which have been identified in the opportunity area. Our strategy for each area is to:

### Central Area:

- > Promote the redevelopment or remodelling of the shopping centre.
- > Promote a range of retail unit sizes and appropriately located affordable retail units.
- > Provide a range of new arts, cultural, leisure and entertainment uses.
- > Strengthen pedestrian and cycle links in the area.
- > Improve the northern line station by providing an improved ticket hall and additional lifts or escalator access to the platforms.
- > Replace the subways under the northern roundabout with surface level crossings.
- > Promote London Road as a public transport only corridor and introduce two-way traffic movement on St George's Road.
- > Build a new leisure centre.
- > Consider the development of taller buildings on key sites.

### Enterprise Quarter:

- > Continue to support the educational, economic and business function of the area.
- > Promote active uses at ground floor.
- > Consider the development of taller buildings on key sites.
- > Pedestrianise Keyworth Street and improve the gateways into the university.
- > Protect the character of the St. George's Circus Conservation Area and improve public realm around the obelisk.

### West Square:

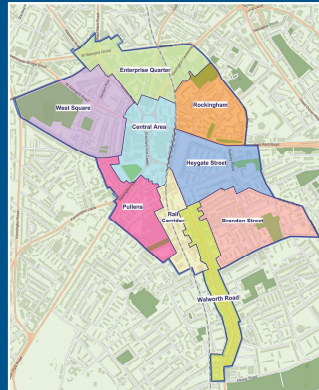
- > Reinforce tree-planting and improve pedestrian and cycle routes to the surrounding area.
- > Protect the character of the West Square Conservation Area.
- > Designate a new conservation area around Elliott's Row.

### Rockingham:

- > Improve the public realm around the shops on Harper Road.
- > Improve green links and make better use of green spaces.
- > Look for opportunities to make improvements to the Rockingham Community Centre.

### Rail Corridor:

- > Encourage a range of town centre uses in the railway arches.
- > Introduce additional east-west routes through the arches.
- > Create a new neighbourhood on Manor Place depot with a sympathetic conversion of the former baths.



### Heygate Street:

- > Create a vibrant new quarter on the Heygate site.
- > Provide a mix of retail types and sizes.
- > Promote a new market square and public park on the Heygate site and link new and existing spaces into the network of green routes.
- > Provide around 3,000 new homes including 2,500 on the Heygate site.
- > Introduce north-south routes through the Heygate site and east-west movement through the railway viaduct.
- > Promote a taller building at the northern end of Walworth Road to define a gateway into the central area.
- > Maximise the retention of trees on the Heygate site.

### Pullens:

- > Improve pedestrian and cycle routes through the railway viaduct.
- > Green streets and improve green links.
- > Protect the character of the Pullens Conservation Area.

### Brandon Street:

- > Explore opportunities to improve East Street market.
- > Improve green links and pedestrian and cycle routes into the surrounding area.
- > Improve nature conservation in Nursery Row Park.
- > Designate a new conservation area around Larcom Street.

### Walworth Road:

- > Ensure new development provides a mix of uses, including active ground floor frontages.
- > Look for opportunities to improve shop fronts.
- > Restrict growth of hot-food takeaways.
- > Reinforce the character of the street.

## Appendix 2

Walworth Community Council  
21 January 2012

Draft Elephant and Castle Opportunity Area Supplementary Planning Document (SPD)

<b>Workshop 1</b>
<b>Town Centre (Shopping and jobs)</b> <b>(SPD1, SPD2, SPD3, SPD4)</b>
<b>Homes</b> <b>(SPD5)</b>

<b>1. Town Centre (Shopping and jobs)</b>
<p>How often do you visit the Elephant and Castle shopping centre and/or the Walworth Road for shopping?</p> <p>What kind of shopping do you do (food, clothes, appliances)? Are there other things you do on Walworth Road and in the shopping centre e.g. visit banks, restaurants, pubs, leisure facilities (bingo, bowling)?</p> <p>What improvements could be made to the range and type of shops in the area?</p> <p>Do you visit the markets (East Street or the shopping centre market)? What sort of improvements would you like to see to markets?</p> <p>What sort of measures are needed to stimulate growth in the local economy and help support the growth of small and medium sized businesses?</p>

**4. Homes**

In which character areas in the opportunity area do you want to see more housing built?

When designing homes, what things is it important to think about? (e.g. provision of balconies or gardens, children's play equipment, good sized room etc)

Should all new family housing have private amenity space? (gardens, balconies or roof terraces?)

How do students add to the character of the area and do they contribute to the local economy? Should we encourage more student housing?

Please return your completed questionnaire to:

**FREEPOST RSCE-TGHU-CUZB**  
**Southwark Council**  
**Planning Policy**  
**160 Tooley Street**  
**Fifth Floor**  
**London**  
**SE1 2TZ**

**If you wish to be contacted about our future planning policy consultation documents please provide us with your contact details and we will add you to our mailing list**

**Name:** .....  
**Organisation:** .....  
**Address:** .....  
.....  
**Email:** .....

Walworth Community Council  
21 January 2012

**Draft Elephant and Castle Opportunity Area Supplementary Planning Document (SPD)**

**Workshop 2**

**Social and Community Infrastructure (health facilities, schools, leisure centre, faith groups)**  
(SPD6, SPD7, SPD8, SPD9)

**Transport and Movement (public transport, cycling, walking and vehicles)**  
(SPD10, SPD11, SPD12, SPD13, SPD14)

**1. Social and Community Infrastructure (health facilities, schools, leisure centre, arts and cultural facilities)**

What social and community facilities do you or your family use in the area at the moment? (eg schools, health facilities, libraries, faith groups etc)

What are the needs that we should be thinking about in preparing the planning framework?

Our guidance states that new communities facilities (such as Walworth academy) should be made available outside hours for other members of the community to use? Do you agree with this? Are there other measures we can take to accommodate the needs for people to meet, hold parties, practice faiths etc?

The area has two universities: London Southwark Bank University and the London College of Communication. What are the advantages of having these universities locally?

What should our planning guidance say about the need for student housing?

**2. Transport and Movement (public transport, cycling, walking and vehicles)**

What is your experience of travelling in the area by the following modes of transport? What problems should we be trying to address for each of these?

- Walking - what makes a good route for walking?
- Cycling - how can we encourage people to cycle more?
- Bus, underground and rail - what improvements are needed over the next 15 years?
- Car - should we be trying to keep parking levels very low in new developments? What else can we do about congestion and about existing parking problems?
- How often do you use public transport (bus, rail, tube) in the area?

Please return your completed questionnaire to;

**FREEPOST RSCE-TGHU-CUZB**  
**Southwark Council**  
**Planning Policy**  
**160 Tooley Street**  
**Fifth Floor**  
**London**  
**SE1 2TZ**

**If you wish to be contacted about our future LDF consultations we will add you to our mailing list**

**Name:** .....

**Organisation:**.....

**Address:** .....

.....

**Email:** .....

Walworth Community Council  
21 January 2012

**Draft Elephant and Castle Opportunity Area Supplementary Planning Document (SPD)**

<b>Workshop 3</b>
<b>Built Environment (Design, tall buildings, public realm, conservation areas) (SPD15, SPD16, SPD17)</b>
<b>Open Spaces (Open spaces, trees, green links, sustainability) (SPD18, SPD19)</b>

<b>1. Built environment (Design, tall buildings, public realm, conservation areas)</b>
<p>What examples are there in the area where the quality of the public realm is good? Where do buildings work particularly well with public realm?</p> <p>What are the key features that make public realm feel comfortable and attractive?</p> <p>In which areas should the public realm be improved? What kind of improvements should be made?</p> <p>What areas in the opportunity have a really good character (buildings, open spaces, activities, people etc) and why?</p> <p>What are some of the benefits and disadvantages of tall buildings?</p> <p>What are the principles we should put in the planning framework to make sure that tall buildings are in the right place, have high quality design and avoid the disadvantages?</p>



## 2. Open Spaces, Green routes and trees

How often do you visit open spaces, and what kind of activity do you visit open spaces for?

Where are there examples of good quality open spaces in the area? What makes them good?

Are there any open spaces in Walworth you think could be improved and how?

How can we link spaces more effectively using green links? Where should these links be and what should their function be? (e.g. biodiversity, recreation, transport, creating an attractive landscape). Can you think of examples of good green links locally or elsewhere?

Please return your completed questionnaire to;

**FREEPOST RSCE-TGHU-CUZB**  
**Southwark Council**  
**Planning Policy**  
**160 Tooley Street**  
**Fifth Floor**  
**London**  
**SE1 2TZ**

**If you wish to be contacted about our future planning policy consultations we will add you to our mailing list**

**Name:** .....

**Organisation:**.....

**Address:** .....

**Email:** .....

<b>Item No.</b> 11.	<b>Classification:</b> Open	<b>Date:</b> 10 March 2012	<b>Meeting Name:</b> Walworth Community Council
<b>Report title:</b>		Cleaner Greener Safer 2012/13: Funding Allocation	
<b>Ward(s) or groups affected:</b>		East Walworth, Faraday, Newington	
<b>From:</b>		Des Waters, Head of Public Realm, Environment and Housing	

### RECOMMENDATIONS

1. To approve the allocation of funds for the 2012-13 Cleaner Greener Safer programme in the Walworth Community Council area from the list of applications set out in Appendix 1.

### BACKGROUND INFORMATION

2. The council's Cleaner Greener Safer programme has been running since 2003.
3. In the first seven years of the CGS programme £21,503,000 has been allocated to community councils leading to 1,111 projects being approved.
4. In the Walworth Community Council area, £2,686,000 has been allocated to 140 projects, 136 of which have been completed to date.
5. Examples of the types of projects that have been funded include:
  - Parks, community gardens, landscaping, tree planting and wildlife areas.
  - Children's playgrounds, youth facilities, ball courts and cycle tracks.
  - Lighting, security measures, pavements, streets, and tackling 'grot spots'.
6. There was no new funding allocated for CGS in 2011/12, in part due to other pressures on the council's capital budgets and also to allow a backlog of approved or outstanding projects from previous years to be delivered.

### KEY ISSUES FOR CONSIDERATION

7. There is £245,846 for the 2012/13 CGS programme and £11,500 unallocated funding from previous years, giving an overall budget of £257,346 for new projects in the Walworth Community Council area.
8. Eligible proposals must bring about a permanent improvement and make an area cleaner, greener or safer.
9. Proposals with revenue costs, including salaries or computer equipment, feasibility studies, costs for events, festivals, workshops or other one-off events are not eligible. CCTV proposals, internal improvements to housing property, works on schools where there is no access to the general public are also not eligible. Works on private property are not eligible unless there is a long-term guarantee of public access or a demonstrable public benefit.

10. This year, the application form invited expressions of interest for the applicants to deliver projects themselves. A due diligence exercise to ensure that this is both practical and realistic has been undertaken as part of the feasibility process. In such cases, the council would give the funding allocation to the applicant in the form of a capital grant, with appropriate conditions attached.

### **Policy implications**

11. The Cleaner Green Safer programme is fully aligned with the council's policies around sustainability, regeneration and community engagement.

### **Community impact statement**

12. The roles and functions of community councils include the promotion of involvement of local people in the democratic process and taking decision-making closer to local people. Community councils take decisions on local matters including environmental improvement and community safety as well as consultation on a wide range of policies and strategies that affect the area.
13. An explicit objective within community councils is that they be used to actively engage as widely as possible with, and bring together, Southwark's diverse local communities on issues of shared or mutual interest. The Cleaner Greener Safer programme is an important tool in achieving community participation.
14. All ideas for CGS projects come directly from the local community via a simple project nomination form. Specific schemes will then be agreed by Community Councils and will reflect local needs and priorities.

### **Resource implications**

15. The funding for the 2012/13 CGS programme was approved by the cabinet and is part of the council's overall capital programme.
16. All professional fees related to the project are also allowed to be treated as the capital costs of the project. Where projects are awarded as a grant to organisations, the community council award letter will not include the professional fees which will be charged direct to project costs.
17. CGS projects must be completed within two years of award of funding. Projects that are unlikely to be completed within two years will be reported to Community Council and available budgets may be reallocated to other projects.
18. After the defects and liability period, or three year maintenance period in the case of planting works, all future maintenance is assumed by the asset owner, for example Housing, Parks, Highways, or in some cases external asset owners. Therefore, there are no revenue implications to the Public Realm projects business unit as a result of approving the proposed allocation.

### **Consultation**

19. All Cleaner Greener Safer projects require consultation with stakeholders, including the project applicant, local residents, Tenants and Residents Associations and local community groups where appropriate.

## SUPPLEMENTARY ADVICE FROM OTHER OFFICERS

### Strategic Director of Communities, Law & Governance

20. This report is recommending that the Walworth Community Council approve the allocation of funds to the individual projects specified at Appendix 1. The power for this function is derived from Part 3H paragraph 13 of the Constitution which states that community councils have the power of “approval of the allocation of funds to cleaner, greener, safer capital schemes of a local nature, using the resources identified by the cabinet”.
21. The Cabinet Member for Transport Environment and Recycling has already noted the allocation of the Cleaner Greener Safer funds in October 2011 by exercising his powers under Part 3D paragraph 2 of the Constitution, therefore this is the next constitutional step in the process.

### Finance Director (NR/F&R/1/3/12)

22. This report recommends approval of the allocation of funds for the 2012-13 Cleaner Greener Safer programme in the Walworth Community Council area from the list of applications set out in Appendix 1.
23. The Finance Director notes the resource implications contained within the report, and confirms that the capital funding for the CGS programme has been approved as part of the overall council capital programme.
24. Officer time to effect the recommendation will be contained within existing budgeted revenue resources.

## BACKGROUND DOCUMENTS

Background Papers	Held At	Contact
Cleaner Greener Safer: Funding Reallocation	Public Realm Projects – Environmental Improvements, Public Realm 3/1, 160 Tooley Street, London, SE1 2TZ	Michelle Normanly 020 7525 0862
2012/13 Camberwell Community Council CGS applications – full applications	Public Realm Projects – Environmental Improvements, Public Realm 3/1, 160 Tooley Street, London, SE1 2TZ	Michelle Normanly 020 7525 0862
Report: Cabinet member for Transport, Environment & Recycling - launch of CGS Capital Programme 2012/13 – 20 October 2011	Public Realm Projects – Environmental Improvements, Public Realm 3/1, 160 Tooley Street, London, SE1 2TZ	Michelle Normanly 020 7525 0862

**APPENDICES**

<b>No.</b>	<b>Title</b>
Appendix 1	Walworth Community Council - Cleaner Greener Safer applications 2012/13

**AUDIT TRAIL**

<b>Lead Officer</b>	Des Waters, Head of Public Realm	
<b>Report Author</b>	Andrea Allen, Senior Project Manager	
<b>Version</b>	Final	
<b>Dated</b>	28 February 2012	
<b>Key Decision?</b>	No	
<b>CONSULTATION WITH OTHER OFFICERS / DIRECTORATES / CABINET MEMBER</b>		
<b>Officer Title</b>	<b>Comments Sought</b>	<b>Comments included</b>
Strategic Director of Communities, Law & Governance	Yes	Yes
Finance Director	Yes	Yes
<b>Cabinet Member</b>	No	No
<b>Date final report sent to Constitutional Team</b>	2 March 2012	

## Appendix 1

**Walworth Community Council**  
**Cleaner Greener Safer applications 2012/13**

Reference	Proposal Name	Ward
CGS117046	skate park for the community	All Walworth
120758	Revitalising East Street Market	All Walworth
CGS115997	Kingslake tenants & resident association green play area	East Walworth
CGS116009	New Kingslake safety intercom door project	East Walworth
117974	Improvements to Locksfield sheltered housing unit green areas	East Walworth
CGS119442	Bins, Benches and Bird Boxes for Burgess Park Food Project	East Walworth
CGS119598	Green walkway in Nursery Row Park	East Walworth
CGS120127	Children's Playground on Nile Terrace / Oakley Place	East Walworth
CGS120160	BFPF Shared Access Tool Store	East Walworth
CGS120214	Congreve Community Gardens/Allotments	East Walworth
CGS120333	More street trees round Victory Community Park	East Walworth
CGS120482	Renovating Victory Community Park.	East Walworth
CGS120705	Wansey Street Community Garden	East Walworth
120739	Robert Browning Out and Away Scheme	East Walworth
CGS120348	Improved security gate and fence at Rodney Road, Peabody Estate - installation of	East Walworth
CGS120361	The Wiggly Wall, Heart of the Park , Burgess Park	Faraday
CGS119518	Protect trees in Faraday Gardens	Faraday
CGS120311	Rehabilitation of canal bridge Burgess Park	Faraday
CGS120353	Camberwell Butterfly	Faraday
CGS120363	Michael Faraday Plug	Faraday
CGS120423	Sedan Way/Surrey Square Park Wild Life Area, Green Link Regeneration	Faraday
CGS120443	Improvements to Charlie and Bett Diamonds Memorial Garden. Fielding Street / Em	Faraday
CGS120481	Trees trunks for naturalistic play in Burgess Park	Faraday
CGS120514	Nelson Estate Community Gardens & Bicycle Lockers	Faraday
CGS120760	Cambridge House external works	Faraday
CGS120761	Aylesbury estate grot spots fund	Faraday
CGS120762	Faraday ward grot spots fund	Faraday
CGS115318	garage security at Pullens Estate	Newington
CGS119462	Improvements to the Park environment (Pasley Park SE17)Bid submitted by the Frie	Newington
CGS119884	Lighting Improvements at Kennington Open Space	Newington
CGS119971	Childrens Gardening project on Brandon estate	Newington
CGS120012	Making Walworth Garden Farm more visible and accessible for the community.	Newington
CGS120158	Crocus planting at Kennington Open Space	Newington
CGS120199	Landscape the Green (between Penrose Street and Eglington Court).	Newington
CGS120332	Planting and greening on Lorrimore Road	Newington
CGS120346	Promoting wider use of Pullens Centre	Newington
CGS120485	Fielding St Allotment Improvements	Newington
120731	Contra flows and cut throughs for cycling	Newington

## Agenda Item 13



COMMUNITY COUNCILS  
A voice for your community



**Walworth Community Council  
Saturday 10 March 2012**

**Public Question form**

**Your name:**

**Your mailing address:**

**What is your question?**

**Please give this to Gerald Gohler, Constitutional Officer, or Pauline Bonner  
Neighbourhood Co-ordinator**

### Feedback on queries raised at previous community council meetings

Question	Response
Have LendLease the finance in place yet?	Not yet, as no financier will agree to fund a scheme which doesn't yet have planning consent. Discussions with financiers are progressing well, however, with considerable favourable interest being shown for the scheme.
<b>ACTION:</b> Chair to invite TfL to the next meeting to present give feedback on accepting Southwark's "AD" badges on red routes.	Awaiting response from TfL.
"Can we have a plaque to honour, Princess Diana in front of St Matthews's Church at the Elephant and Castle, because next year will be the 20 <sup>th</sup> anniversary of her visit to Southwark?"	It is possible that such a plaque could be commissioned through Leaner Architecture who administer the Blue Plaque schemes. However, this would require the endorsement of the Community Council, the identification of funds via the Cleaner Greener Safer fund and the agreement of the Church. Any such plaque may also require planning permission and the agreement of Princess Diana's representatives/estate.
"Did you have a meeting on Southwark burial or is it to come?"	Deborah McKenzie, Parks Service Development Officer, attended Walworth Community Council on 14 September 2011. At that meeting, she announced that a consultation event would be held on 24 September 2011 from 1pm to 4pm at Honor Oak recreation ground in Brenchley Gardens.
"We as a tenant and resident association are being asked to change our constitution by the council: 1. We have a clause that a general meeting may be called, if and when needed, 2. The council ask for a change to 4 general meetings a year, 3. What happens if at our AGM the members vote against this?"	<p>All TRAs in Southwark should operate in line with the agreed model TRA constitution if they wish to be recognised by Southwark Council. The current model constitution stipulates that an association should hold a minimum of 4 general meetings a year, one of these being their AGM.</p> <p>Not meeting the requirements also affects funding from Southwark Council.</p> <p>The Council have identified a small number of Assns who have amended this clause at some point in the past</p>



	<p>and are asking that those groups bring this back in line so they are operating the same way as the other TRAs</p> <p>If the membership do not agree the change at the AGM then there is still an expectation that the Assn meet this requirement and they would have to evidence the four meetings had been held in the annual funding and recognition form. The council would recommend the change be formally agreed so that any new committee members are aware of this stipulation. For further information; a working party of residents from tenant council and homeowners council are currently reviewing this constitution which may result in further changes taking place next year. Towards the end of the year consultation will take place with the area housing forums. TRAs can participate with this consultation through their four forum delegates.</p>
<p>“In light of the increase in trend of the practice of skin lightening/bleaching. What are the council going to do to ensure that the availability of these poisons are stopped: financial implications, prosecutions and education.”</p>	<p>Product safety is one of the main Trading Standards priorities, especially skin lightening products. Officers work very closely with the Medicines and Healthcare Regulatory Agency (MHRA) in addressing this area. Recent cases have involved prosecution followed up by proceeds of crime confiscation of assets. If the Community Council have any intelligence regarding the supply of these products please let officers know so that they can investigate. Obviously because of the action officers have taken in the past the sale of these goods is more 'under the counter' than it used to be, therefore officers are to some extent reliant on incoming Intel to assist them. However, this area still remains a priority and officers take action wherever they can.</p>
<p>“Will the council take steps to improve the safety of Mina Road? It has become a ‘rat-race’ for cars and vans who want to by-pass the traffic lights at the Albany Road/Old Kent Road intersection. The 20 mph limit is ignored. They push through three lanes of traffic to get across to Dunton Road, causing traffic jams and road rage incidents. I am waiting for an inevitable fatal accident on Mina Road. There were proposals to make Mina Road</p>	<p>Awaiting response from officers.</p>

<p>a dead-end at the Old Kent Road. What happened to this?"</p>	
<p>"The signs on the hoardings enclosing the Heygate Estate state clearly: 'THIS REGENERATION SITE HAS 24 HOUR LIVE SECURITY PATROLS'. The police approached residents of Garland Court on the evening of 31 December 2011, looking for witnesses to an incident by the estate. Has the Community Council been informed about this event?"</p>	<p>Awaiting response from officers.</p>
<p>"Are the Community Council also aware of the case of serious assault that occurred on Wansey Street at around 11.00pm on 18 August 2011?"</p>	<p>Awaiting response.</p>
<p>"Is security for the Estate provided by the Council or by the regeneration firm LendLease?"</p>	<p>Awaiting response from officers.</p>
<p>"Residents of Garland Court have not noticed any visible signs of security, or the presence of security on the Heygate site for over a year. How often do these take place?"</p>	<p>Awaiting response from officers.</p>

This page is intentionally blank.

**WALWORTH AGENDA DISTRIBUTION LIST (OPEN)****MUNICIPAL YEAR 2011-12**

**NOTE:** Original held by Constitutional Team; all amendments/queries to  
Gerald Gohler Tel: 020 7525 7420

Name	No of copies	Name	No of copies
<b>Community Council Members</b>		<b>Officers</b>	
Councillor Martin Seaton (Chair)	1	Constitutional Officer (Community Councils) (at CLG, Tooley Street – Second Floor – Hub 4)	56
Councillor Darren Merrill (Vice-Chair)	1		
Councillor Catherine Bowman	1		
Councillor Neil Coyle	1		
Councillor Patrick Diamond	1		
Councillor Dan Garfield	1		
Councillor Lorraine Lauder MBE	1		
Councillor Abdul Mohammed	1		
Councillor Helen Morrissey	1	<b>Others</b>	
<b>Libraries</b>		Shahida Nasim, Audit Commission	1
Branch Libraries (Walworth, East Street, Brandon)	3	Borough Commander Southwark Police Station, 323 Borough High Street, London SE1 1JL	1
Local History Library	1	<b>Total:</b> 75	
<b>Press</b>		<b>Dated:</b> 02 March 2012	
Southwark News	1		
South London Press	1		
<b>Members of Parliament</b>			
Harriet Harman, MP	1		
Simon Hughes, MP	1		